

Useful Strumming Patterns

This sign is used for a down-stroke - ▣
 This sign is used for an up-stroke - ▽

C

F

G



staff 1

count 1 2 3 4

C

F

G



staff 2

count 1 + 2 + 3 + 4 +

G

C

C

F

G

G

F

C

C

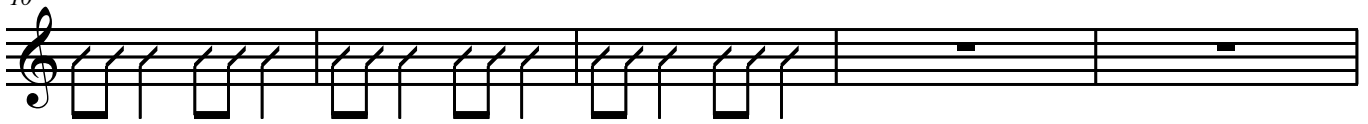


staff 3

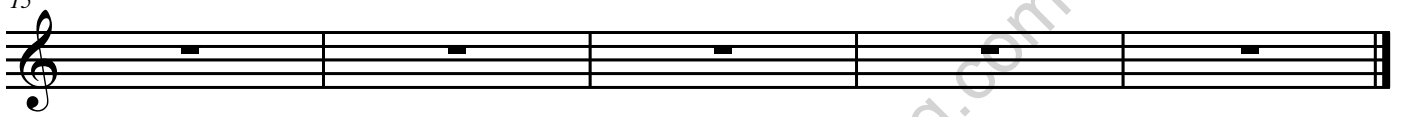
count 1 2 3 4

useful strumming patterns

2
10



15



www.ultimate-guitar-playing.com